



User Manual Of Software for E-paper Display Demonstration



Dalian Good Display Co., Ltd.

Contents

CHAPTER 1 OVERVIEW	3
1.1 Overview	3
1.2 Main Characteristics	3
1.3 Operating Environment	3
CHAPTER 2 INSTALLATION	3
2.1 Installation	3
2.2 Installation of Serial Port Driver (CH340)	4
CHAPTER 3 SOFTWARE INSTRUCTION	5
3.1 Software Preview	5
3.2 Serial Port Settings	5
3.3 Image Adding and Auto-mold Taking	6
3.4 Data Transmissionper	11
CHAPTER 4 FAQs	12
CHAPTER 5 ABOUT US	13

Chapter 1 Overview

1.1 Overview

“ImageToEpd” E-paper demonstration software is a professional control software for controlling E-paper display screen. It is a special operation software integrating mold taking and control. This software provides fast support for real-time picture display of electronic paper display screen.

1.2 Main Characteristics

It can automatically take the mold of the pre-display screen of the electronic paper display screen, support saving as C files, and support the full screen refresh and partial refresh demonstration at the same time. Image formats supported: format (*.JPG,*.BMP)

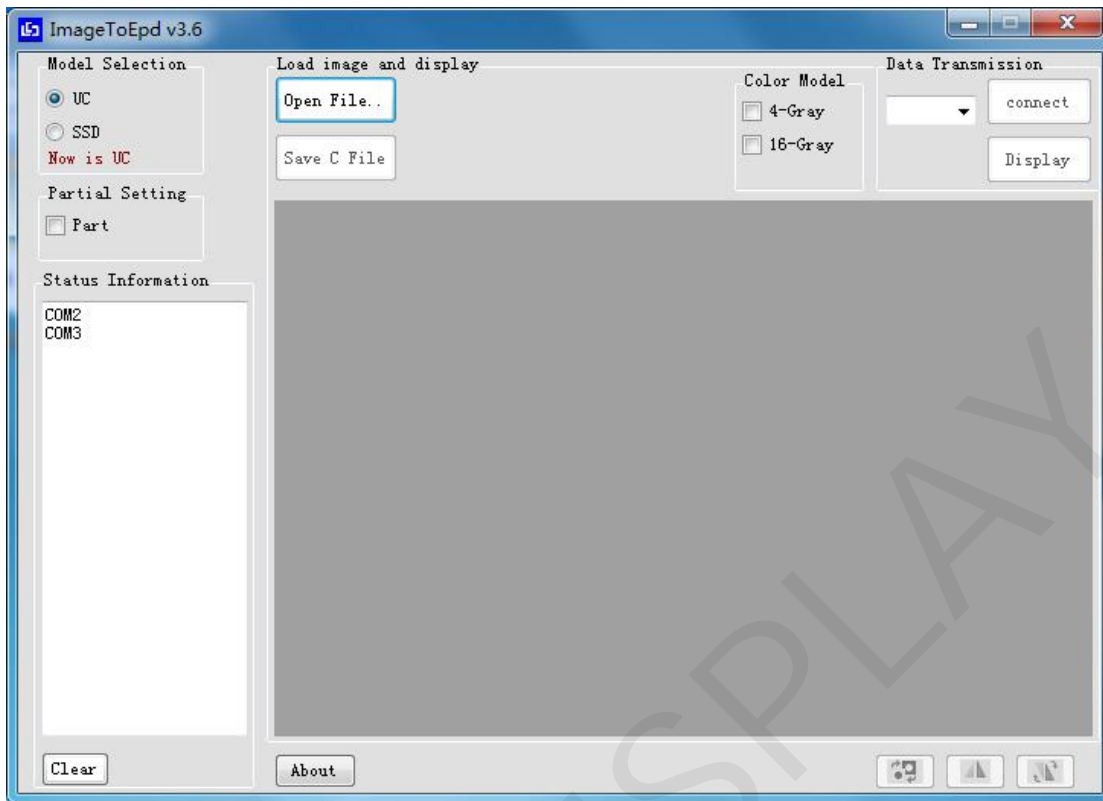
1.3 Operating Environment

Operating System: Windows7/10;

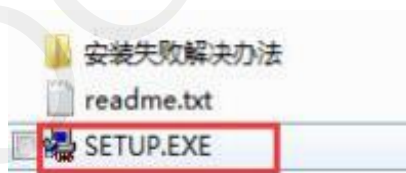
Chapter 2 Installation

2.1 Installation

The E-paper demonstration software is an installation-free version and users can directly open by clicking.



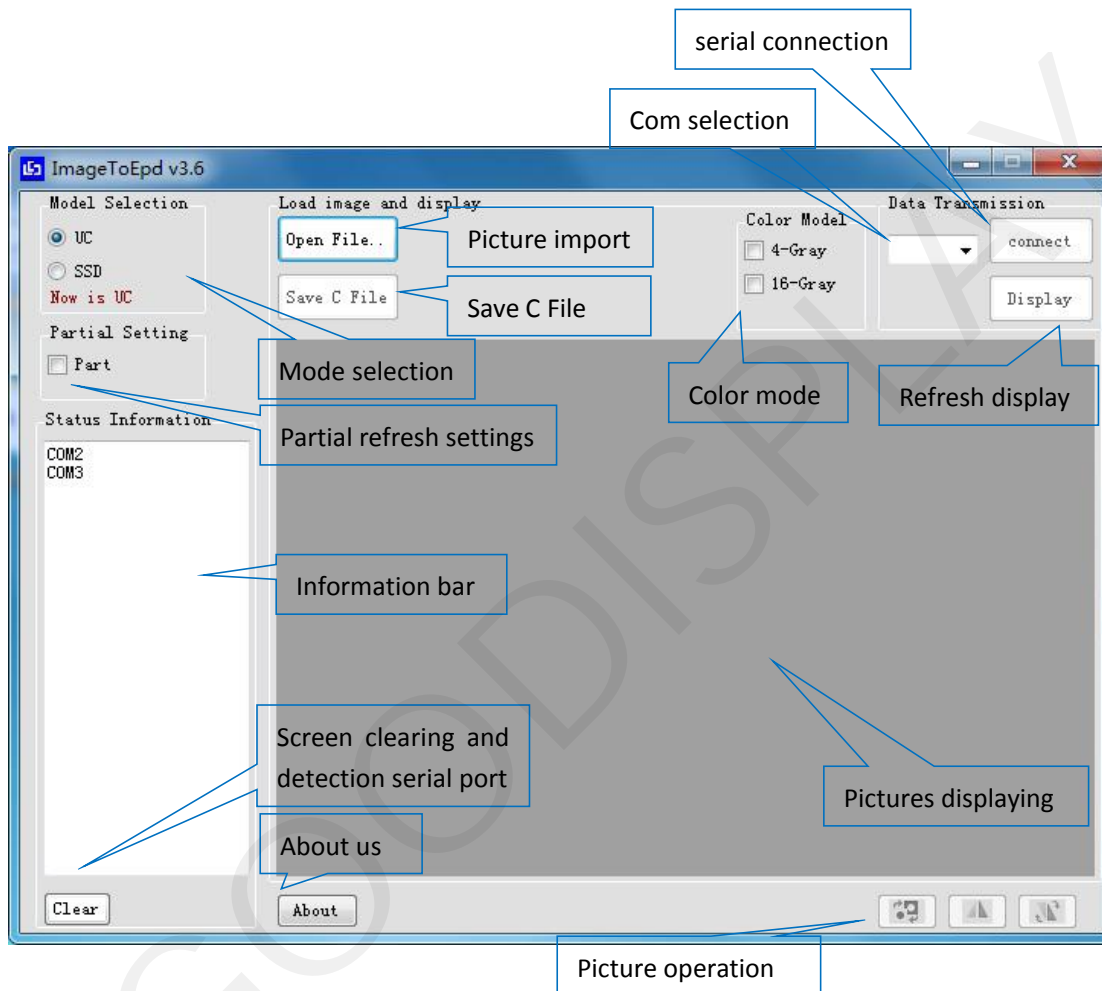
2.2 Installation of Serial Port Driver (CH340)



First double-click **SETUP.EXE** to install the driver.
Click Complete to finish installation.

Chapter 3 Software Instruction

3.1 Software Preview



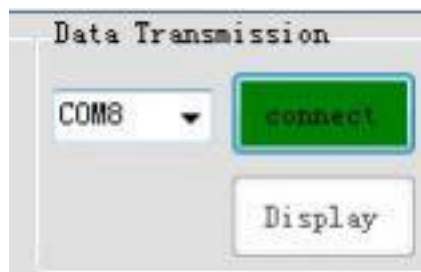
3.2 Serial Port Settings

When using, users first need to connect the demo board to the USB port of the computer, then select the corresponding serial port number, open the upper computer software, and select the corresponding port. Normally, when the software is opened, the available serial port number of the current computer will appear in the information bar. Select your serial port number correspondingly, and the current port number can be updated through the "clear" button.



After that, click "connect" for serial port connection and later information bar will show "connect is success! "

Serial connection is complete.



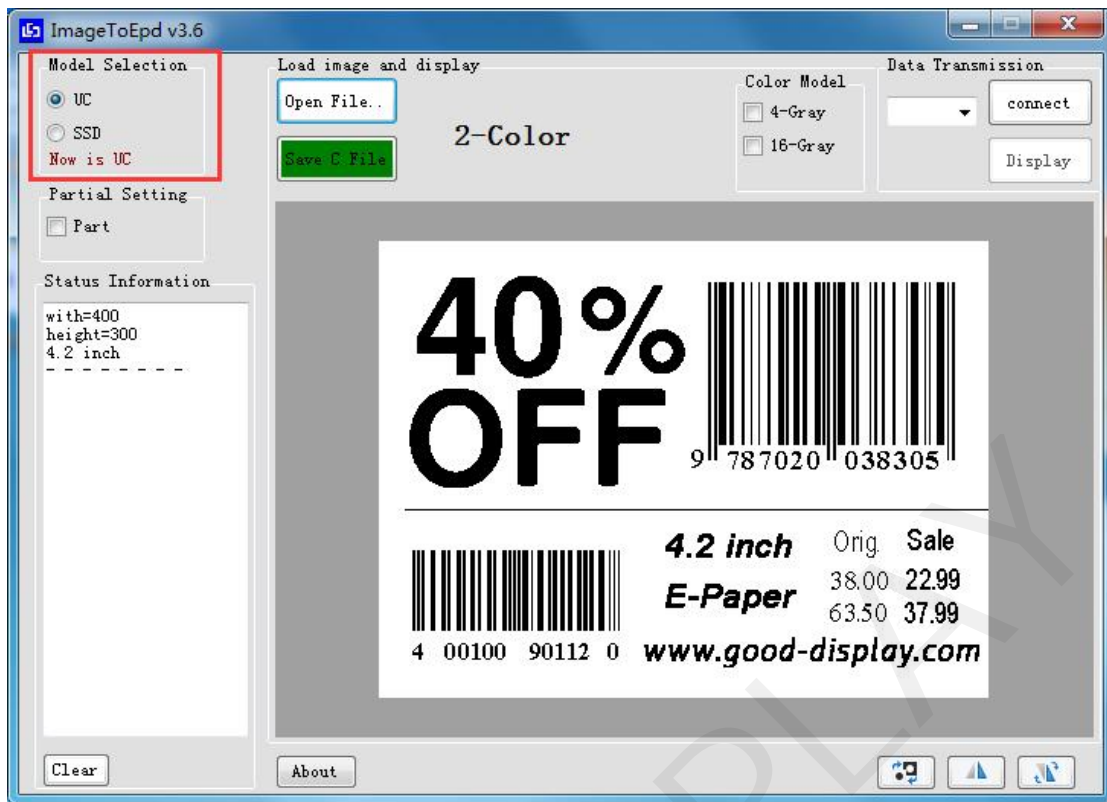
3.3 Image Adding and Auto-mold Taking

3.3.1 Image Uploading

Click 'OpenFile' and select the prepared image to upload. Later, information bar will show the size, resolution, colors and other parameters.

After the picture is uploaded, select the corresponding display mode according to the model of E-paper, and select according to the IC model series of E-paper. UC series generally to GDEW series EPD and SSD series generally to GDEH, GDEY, GDEM and GDEQ series EPD.

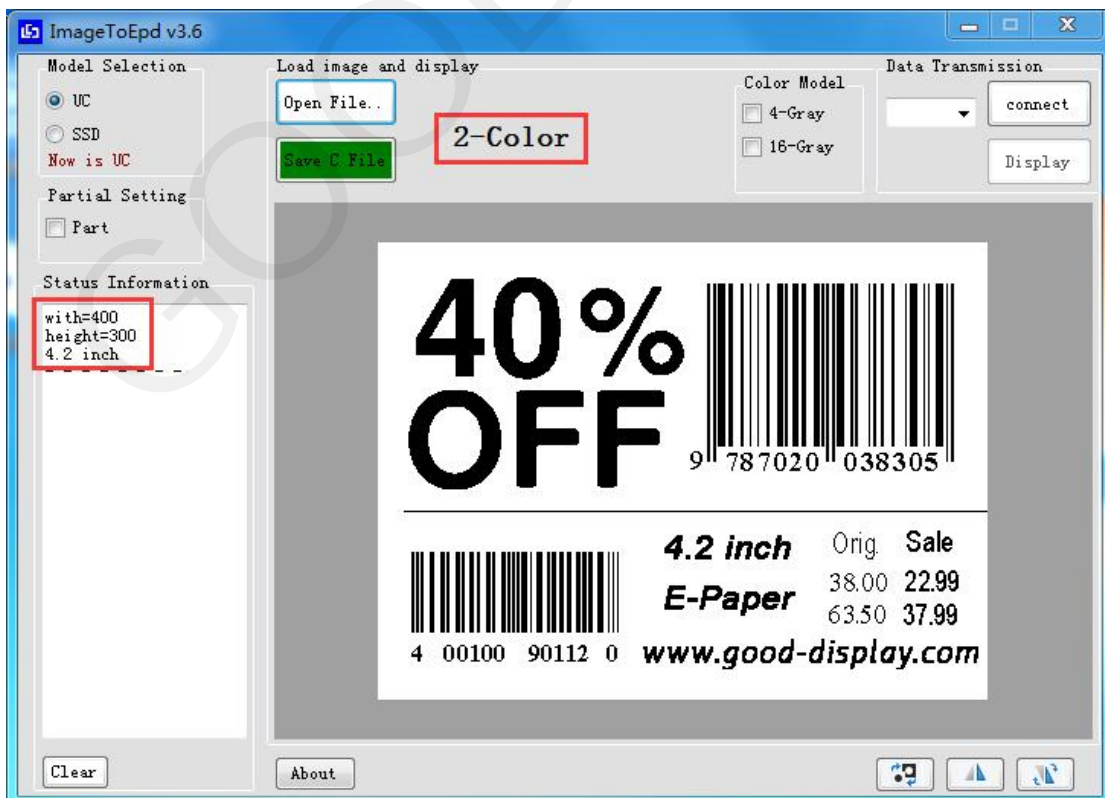
Note: This version now supports the auto-mold taking of E-paper display monochrome and tri-color with size up to 12.48 inch and also support mold-taking at any resolution.



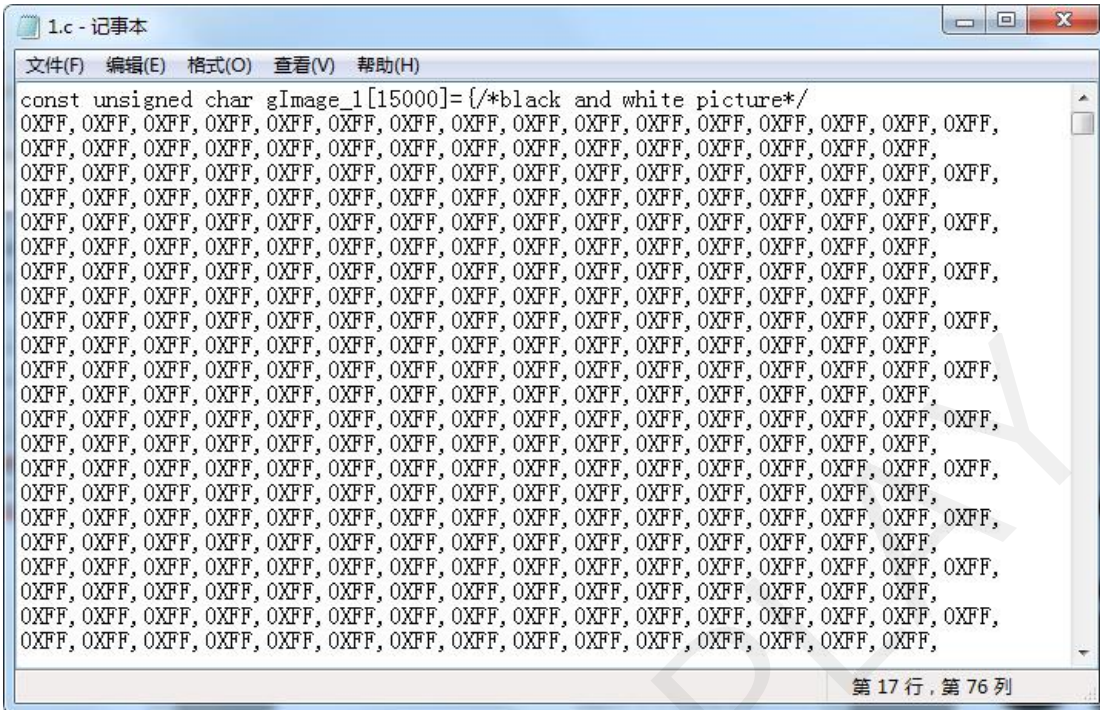
3.3.2 Image Auto-mold Taking

Click 'Save C File' and the software will generate C file automatically, making the whole process much easier.

1) Auto-mold Taking of Monochrome Images:

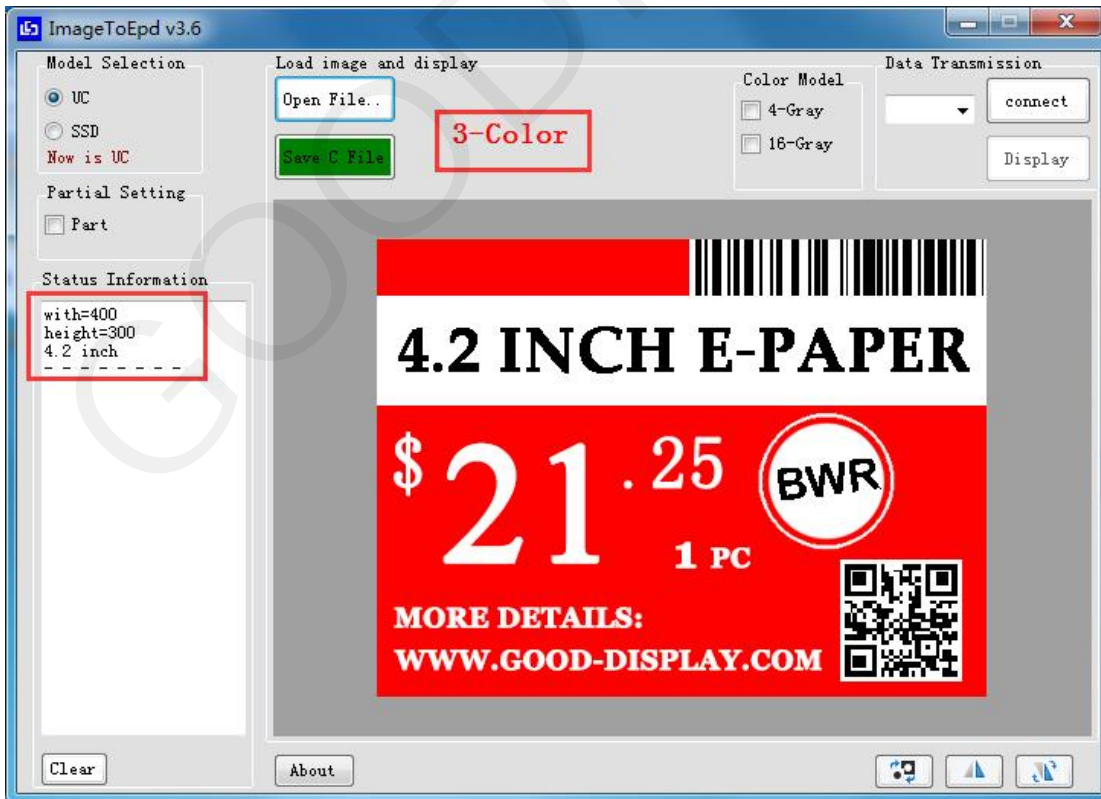


The C file opens automatically after saving, as shown in the image:



Note: "PART" needs to be selected for partial refresh Part

2) The auto-mold taking of black white and red picture:



The C file opens automatically after saving, containing two arrays, as shown in the image:


```

1.c - 记事本
文件(F) 编辑(E) 格式(O) 查看(V) 帮助(H)
const unsigned char gImage_BW1[15000]={/*black and white picture*/
0XFF,0XFF,0XFF,0XFF,0XFF,0XFF,0XFF,0XFF,0XFF,0XFF,0XFF,0XFF,0XFF,0XFF,0XFF,0XFF,
0XFF,0XFF,0XFF,0XFF,0XFF,0XFF,0XFF,0XFF,0XFF,0XFF,0X86,0X70,0X3C,0XC3,0X81,
0XE7,0XCC,0X3F,0X07,0XE6,0X10,0XFF,0X37,0X86,0X01,0X0C,0XC3,0X81,0XE6,0X03,0X03,
0X0E,0X60,0X7B,0XFF,0XFF,0XFF,0XFF,0XFF,0XFF,0XFF,0XFF,0XFF,0XFF,0XFF,0XFF,0XFF,
0XFF,0XFF,0XFF,0XFF,0XFF,0XFF,0XFF,0XFF,0XFF,0XFF,0XFF,0XFF,0X86,0X70,
0X3C,0XC3,0X81,0XE7,0XCC,0X3F,0X07,0XE6,0X10,0XFF,0X37,0X86,0X01,0X0C,0XC3,
0X81,0XE6,0X03,0X03,0X0E,0X60,0X7B,0XFF,0XFF,0XFF,0XFF,0XFF,0XFF,0XFF,0XFF,
0XFF,0XFF,0XFF,0XFF,0XFF,0XFF,0XFF,0XFF,0XFF,0XFF,0XFF,0XFF,0XFF,0XFF,
0XFF,0XFF,0X86,0X70,0X3C,0XC3,0X81,0XE7,0XCC,0X3F,0X07,0XE6,0X10,0XFF,0X37,0X86,
0X01,0X0C,0XC3,0X81,0XE6,0X03,0X03,0X0E,0X60,0X7B,0XFF,0XFF,0XFF,0XFF,0XFF,

```

```


1.c - 记事本
文件(F) 编辑(E) 格式(O) 查看(V) 帮助(H)
0XFF,0XFF,0XFF,0XFF,0XFF,0XFF,0XFF,0XFF,0XFF,0XFF,0XFF,0XFF,0XFF,0XFF,0XFF,
0XFF,0XFF,0XFF,0XFF,0XFF,0XFF,0XFF,0XFF,0XFF,0XFF,0XFF,0XFF,0XFF,0XFF,
0XFF,0XFF,0XFF,0XFF,0XFF,0XFF,0XFF,0XFF,0XFF,0XFF,0XFF,0XFF,0XFF,0XFF,
0XFF,0XFF,0XFF,0XFF,0XFF,0XFF,0XFF,0XFF,0XFF,0XFF,0XFF,0XFF,0XFF,0XFF,
};
const unsigned char gImage_R1[15000]={/*red and white picture*/
0X00,0X00,0X00,0X00,0X00,0X00,0X00,0X00,0X00,0X00,0X00,0X00,0X00,0X00,0X00,
0X00,0X00,0X00,0X00,0X00,0X00,0X00,0X00,0X00,0X00,0X07,0XFF,0XFF,0XFF,0XFF,
0XFF,0XFF,0XFF,0XFF,0XFF,0XFF,0XFF,0XFF,0XFF,0XFF,0XFF,0XFF,0XFF,0XFF,
0XFF,0XFF,0XFF,0X00,0X00,0X00,0X00,0X00,0X00,0X00,0X00,0X00,0X00,0X00,
0X00,0X00,0X00,0X00,0X00,0X00,0X00,0X00,0X00,0X00,0X00,0X00,0X00,0X07,0XFF,0XFF,

```

3) The auto-mold taking of 4-Grayscale and 16-Grayscale picture:

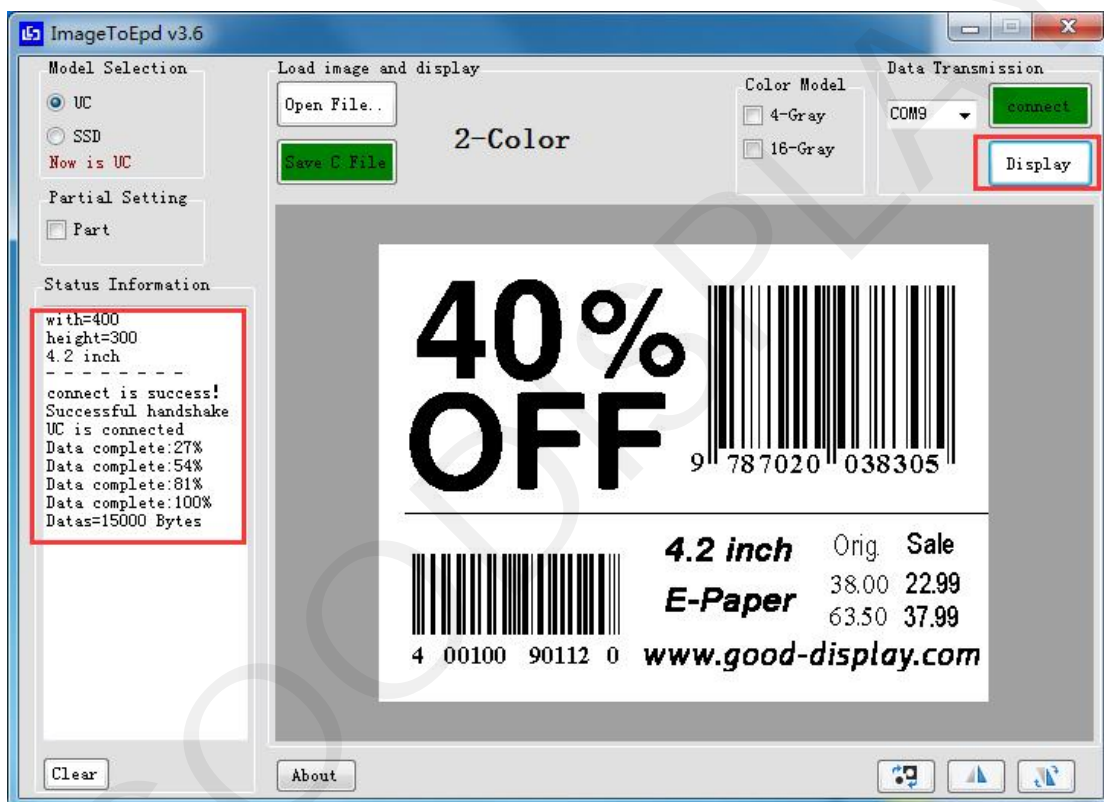
The software defaults to auto-mold taking of black/white and black/white/red pictures, 4 gray and 16 gray pictures need to check the auto-mold taking option in Color mode, the status bar will have a check prompt, and then click the "Save C File" button to save.

Click  mirror the image.

Click  rotate the image 180 degrees.

3.4 Data transmission

Click "Display", when the data transmission is normal, the left information bar will display "Successful handshake", the serial port handshake is successful, and the current amount of data transferred will be displayed.



Chapter 4 FAQs

4.1 Abnormal Serial Port Connection

A. Serial port missing: Serial port driver has not been installed, data line abnormal or DEMO board power supply is switched off

B. Data issuing failed : Please check if the serial connection is normal or not. If not, please unplug to reconnect and restart the software.

4.2 Failure of Data Transmission

After serial port connection is complete, click "Display" but "Successful handshake" does not appear in the information bar. Under this circumstance, first disconnect "connect" and click "Clear" to re-identify serial port number. Redo the serial port connection to issue data.

Chapter 5 About Us

5.1 Contact Us

Click "About" button to get contact information. Please email our technical staff directly should you have any technical questions.

